



The Farm Link

IOWA STATE UNIVERSITY.

Fall 2008
Volume 6
Issue 1

Publication of the AgEds 450 Class and the Ag 450 Farm – An ISU Student Managed Farm

Contact Information

Instructor

Thomas Paulsen
Department of
Agricultural Education
and Studies
217 Curtiss Hall
Iowa State University
Ames, Iowa 50010-1050
(515) 294-0047
tpaulsen@iastate.edu

Farm Manager

Greg Vogel
ISU Ag 450 Farm
52097 260th Street
Ames, Iowa 50011
(515) 292-0742
gvogel@iastate.edu

Teaching Assistant

Doug Dodd
dddodd@iastate.edu

450 Class Officers

Chairman

Nick Hovey

Vice Chairman

Kyle Thomsen

Secretary

Samantha Groves

Historian

Sarah Inglis

IOWA STATE UNIVERSITY.

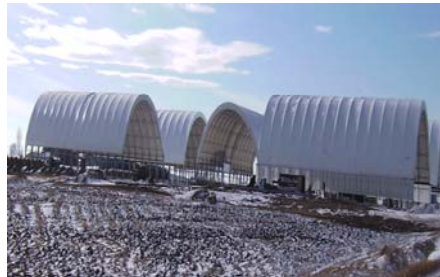
Iowa State University does not discriminate on the basis of race, color, age, religion, national origin, sexual orientation, sex, marital status, disability or status of a U.S. Vietnam Era Veteran. Any persons having inquiries concerning this may contact the Director of Affirmative Action, 318 Beardshear Hall, (515) 294-7612

Fall 2008 has been busy at the Ag 450 farm, especially when the AgEdS 450 class voted to add on to the shop. There has been a big need for more storage at the farm for quite some time. The class was able to afford it this year due to excellent marketing of our grain, so Buildings and Grounds committee got everything off and running.

The project is about one-third done with the biggest hang-up being the wet weather we have had this fall. The poles are in the ground, half of the purlins are fastened and they are starting to hang the header boards. Hopefully, within the next couple of weeks the committee will have the rafters up. The committee is working really hard to get the addition finished before winter, so all the machinery can be put away for the winter.



The Ag 450 farm would like to welcome the Iowa State University Dairy Farm and the new composting facility to the neighborhood. With these new ventures, Iowa State University is moving into the future of agriculture. The AgEdS 450 class looks forward to working with all of the visitors that will be coming to tour the Ag 450 farm and our new state of the art facilities in the neighborhood.





Committee News

IOWA STATE
UNIVERSITY.

Spring 2008
Volume 5
Issue 1

Fall 2008 Class

Building & Grounds

Case Circle
John Finneseth
Nick Sawyer
Jeremy Hartyl
Justin Peters

Crops

Kyle Thomsen
Cole Brotherson
Tim Bruihler
JB Bunda
Brice Vaughn

Finance

Brandon Fischer
Andy Platner
Jason Murphy
Matt Walsh

Marketing

Nick Hovey
Andrew Felton
Andy Thraenert
Justin Wellik
Nathan Johnson

Machinery

Brandon Fonken
Adam Norby
Jim Fitzgerald
Brock Ferris
Dan Hair

Custom

Brad Priest
Shayleen Harrison
Joe Hotke
Dan Oetken
Erick Licht
Kevin Boyer

Public Relations

Sarah Inglis
Samantha Groves
Suzy Vogel
Sarah Ingwersen

Machinery

This semester has kept the Machinery committee busy. They overhauled the John Deere corn head. The committee set the combine for harvest, greased equipment and performed oil changes. They also helped combine corn and soybeans. They would like to get a newer lease tractor to replace the 4840 John Deere. Harvest has been slow due to weather conditions, however machinery has been operating well with only a few minor repairs.

Finance

The Finance committee has been working hard at keeping the farms financial situation under control. We are making progress with updating all the records and hopefully we are making it easier for next semester's class. The Ag 450 farm is working farm, so we constantly have bills coming in. Dealing with the financial situations for this farm has been a positive learning experience and it will help us greatly in our future.

Buildings & Grounds

The Building and Grounds committee has been very busy throughout the semester. They are currently working on the new addition to the shop. They have also put new steel on west and east buildings. They were also responsible for installing a new Ag 450 farm sign. Buildings and Grounds also cleaned up the windbreak behind the farm.

Custom Operations

The Customs committee has been spending a lot of time on the budget for amended top soil project. It has involved projecting start-up costs, break-even prices, operating costs, and net income. They have also completed the custom silage chopping, custom soybean harvest and are currently working on custom corn harvest. They will finish out the year with their custom tillage operation. The hog operation has been self-contained this semester and the committee has been happy about that.

Crops

The Crops committee has purchased most of the seed and inputs for next year's crop. They have successfully completed soybean harvest. They also conducted moisture tests and yield estimates. The crops committee helped coordinate harvest. Throughout the semester, the committee has maintained good relations with vendors they work with.

Marketing

The Marketing committee has been keeping up to date on market reports. They have contemplated buying puts for protection, but decided not to go through it. They have been waiting for the markets to rebound from the financial crisis. They have priced beans, but they are waiting for the markets to hit our target price.

Public Relations

This semester the Public Relations committee was busy updating the brochure for the farm. The brochure is an important tool for recruiting new students and informing visitors about what goes on at the farm. They also updated the farm's website throughout the semester. They are currently trying to mainstream the updating process in order to make it easier for upcoming classes. The Public Relations committee also organized tours of the farm throughout the semester. They really enjoyed hosting a tour of the farm for Hawkeye Community College students. It was a great opportunity for them to meet Iowa State University students.

IOWA STATE
UNIVERSITY.